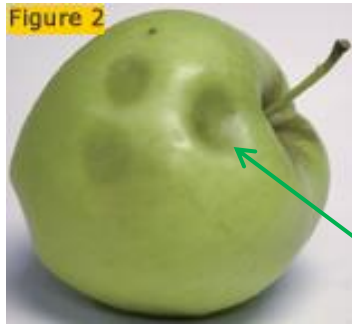


# Apples

## Acceptable



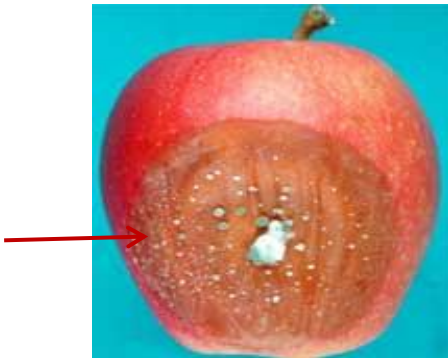
Bruises



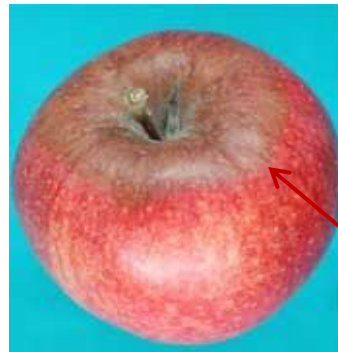
Superficial spot

---

## Not acceptable



Blue mold



Gray mold



Alternaria rot



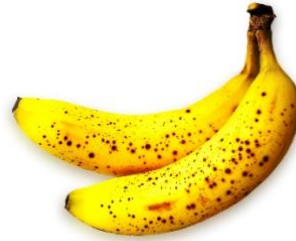
Bull's eye rot

# Bananas

## Acceptable



A few bruises



Slight speckling

---

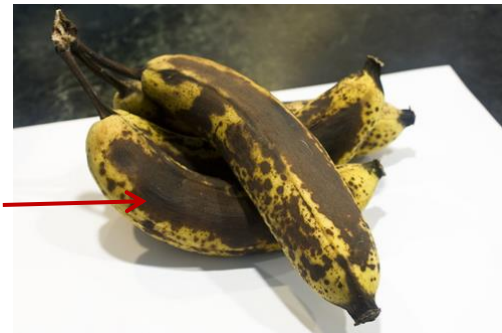
## Not acceptable



Chill damage



Overripe



Also overripe

# Cabbage

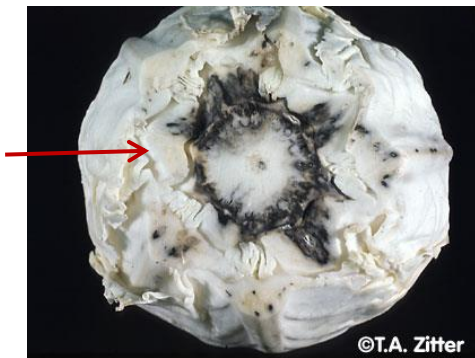
Acceptable



Small spots on outer leaves

---

Not acceptable



Black rot



White rot



Downy mildew

# Cantaloupe

## Acceptable



Slight discoloration

---

## Not acceptable



Mold



Decay



Anthracnose



# Carrots

## Acceptable



Spots on outer surface



Odd shapes

---

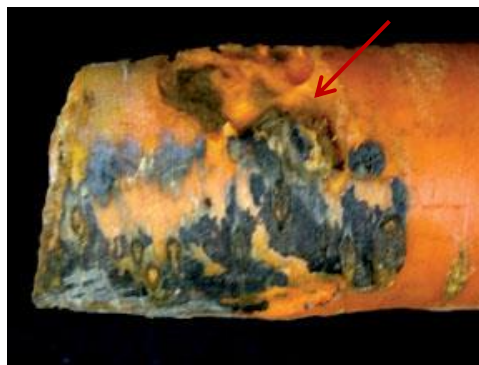
## Not acceptable



Rot



Mold



More rot

# Lettuce

## Acceptable



Brown core



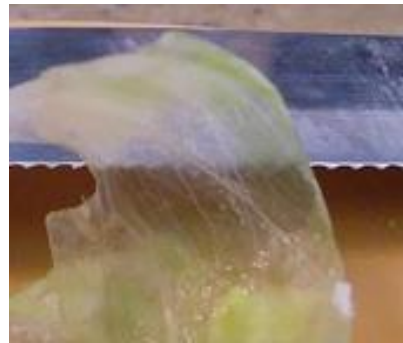
Tear/slight bruising

---

## Not acceptable



Wilted leaves



Translucent leaves (freeze damage)



White mold

## Onions (bulb)

Acceptable



Small sprouts



Unusual shape

Not acceptable



Bulb rot



Bacterial soft rot



Neck rot



Sour skin

# Oranges

## Acceptable



Slightly green oranges



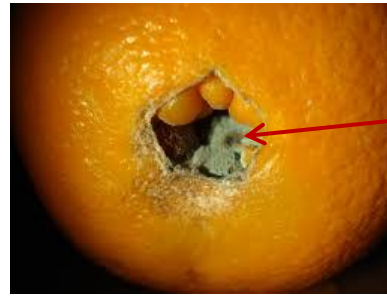
Small spots

---

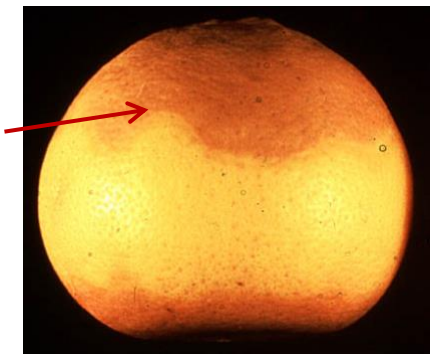
## Not acceptable



Mold



Mold in navel



Stem end decay



More mold (green)

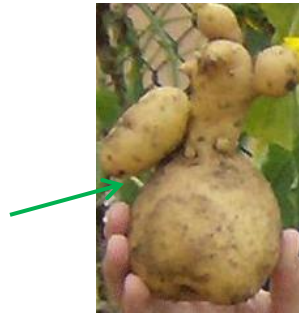


# Potatoes

## Acceptable



Small peepers (sprouts)



Odd lumps

## Not acceptable



Moldy cut



Green potato (solanine)



Common scab



Late blight

## Sweet potatoes

### Acceptable



Odd shapes



Small sprouts

---

### Not acceptable



Mold



Chill damage (soft spots)

# Tomatoes

## Acceptable



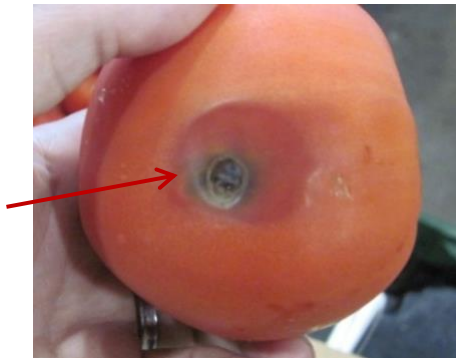
Slight dent



Greenish tint

---

## Not acceptable



Moldy bruise



Black rot



Late blight



Mold and bruising

# Watermelon

## Acceptable



White/yellow patch



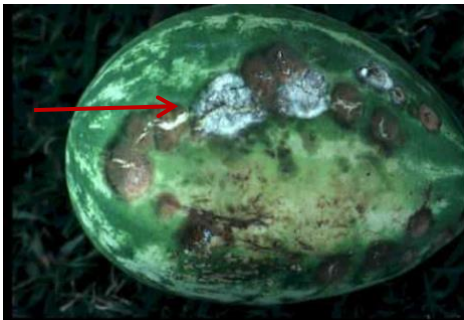
Small spots

---

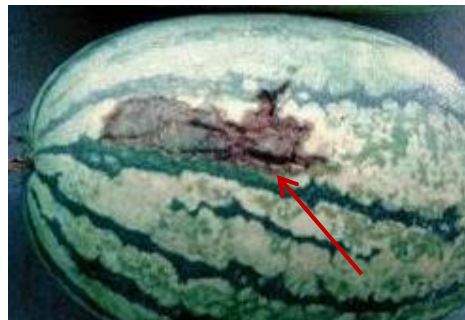
## Not acceptable



Decay



Anthracnose



Fruit blotch